



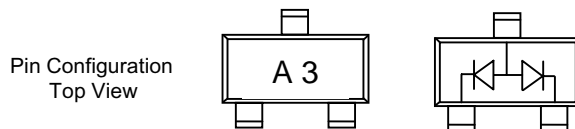
Changshu Talent
Semiconductors Co.,Ltd
Tel:0086-512-52851998
Fax:0086-512-52153129

1SS181

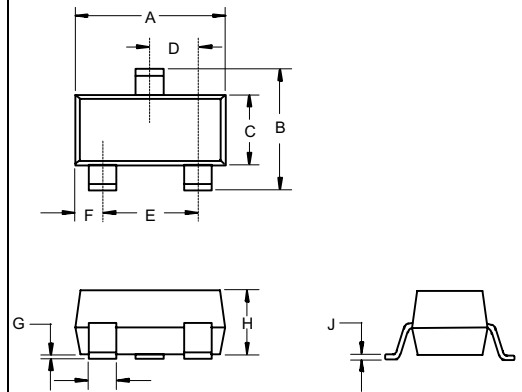
Features

- Low Forward Voltage
- Low Leakage Current
- Surface Mount SOT-23 Package
- Epoxy meets UL 94 V-0 flammability rating
- Moisture Sensitivity Level 1

**150mW High Speed
Switching Diodes
80 Volt**



SOT-23



DIMENSIONS

| DIM | INCHES | | MM | | NOTE |
|-----|--------|-------|------|------|------|
| | MIN | MAX | MIN | MAX | |
| A | .110 | .120 | 2.80 | 3.04 | |
| B | .083 | .104 | 2.10 | 2.64 | |
| C | .047 | .055 | 1.20 | 1.40 | |
| D | .035 | .041 | .89 | 1.03 | |
| E | .070 | .081 | 1.78 | 2.05 | |
| F | .018 | .024 | .45 | .60 | |
| G | .0005 | .0039 | .013 | .100 | |
| H | .035 | .044 | .89 | 1.12 | |
| J | .003 | .007 | .085 | .180 | |
| K | .015 | .020 | .37 | .51 | |

Maximum Ratings

| | | |
|--|-----------|---|
| Reverse Voltage | V_R | 80V |
| Forward Current | I_F | 100mA |
| Surge Current (10ms) | I_{FSM} | 2.0A |
| Power Dissipation @ $T_A=25^\circ\text{C}$ | P_D | 150mW |
| Storage Temperature Range | T_{stg} | -55°C to $+150^\circ\text{C}$ |
| Junction Temperature | T_j | 150°C |

Electrical Characteristics @ 25°C Unless Otherwise Specified

| | | | |
|---|------------|------------------|---|
| Minimum Reverse Breakdown Voltage | $V_{(BR)}$ | 80V | $I_R=100\mu\text{A}$ $T_A = 25^\circ\text{C}$ |
| Maximum Forward Voltage | V_F | 1.2V | $I_F = 100\text{mA};$ $T_A = 25^\circ\text{C}$ |
| Maximum Reverse Voltage Leakage Current | I_R | $0.5\mu\text{A}$ | $V_R=80\text{Volts}$ $T_A = 25^\circ\text{C}$ |
| Maximum Diode Capacitance | C_D | 4.0pF | Measured at $f=1.0\text{MHz}, V_R=0$ |
| Maximum Reverse Recovery Time | t_{rr} | 4.0ns | $I_F = 10\text{mA}$ |

Suggested Solder Pad Layout

