



Changshu Talent  
Semiconductors Co.,Ltd  
Tel:0086-512-52851998  
Fax:0086-512-52153129

## BAS40WT/-04/-05/-06

### Features

- Pow Dissipation PD=200mW Tamb=25°C
- Forward Current I<sub>F</sub>=200mA
- Breakdown Voltage VBR=40V
- Epoxy meets UL 94 V-0 flammability rating
- Moisture Sensitivity Level 1

## 200mW 40Volt Plastic-Encapsulate Diode

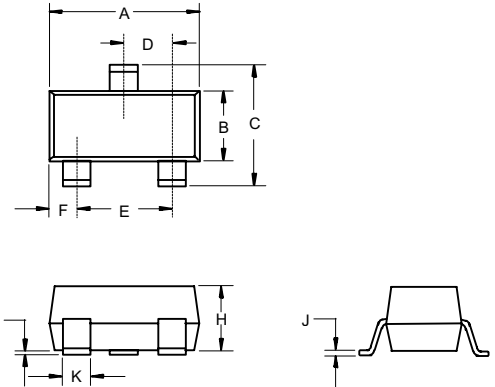
### Maximum Ratings

- Operating Temperature: -55°C to +150°C
- Storage Temperature: -55°C to +150°C

### Electrical Characteristics @ 25°C Unless Otherwise Specified

Reverse Breakdown Voltage	V <sub>(BR)R</sub>	40V	I <sub>R</sub> =10μA
Maximum Instantaneous Forward Voltage	V <sub>F</sub>	380mV 1000mV	I <sub>FM</sub> = 1mA; I <sub>FM</sub> = 40mA;
Maximum DC Reverse Current At Rated DC Blocking Voltage	I <sub>R</sub>	1uA	V <sub>R</sub> =30Volts
Typical Junction Capacitance	C <sub>D</sub>	5pF	Measured at 1.0MHz, V <sub>R</sub> =0V
Reverse Recovery Time	T <sub>rr</sub>	5nS	I <sub>F</sub> =10mA through I <sub>R</sub> =10mA to I <sub>R</sub> =1mA

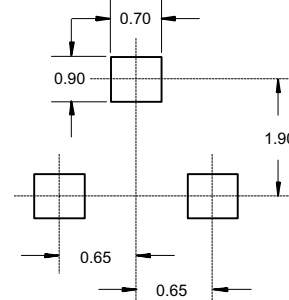
### SOT-323



#### DIMENSIONS

DIM	INCHES		MM		NOTE
	MIN	MAX	MIN	MAX	
A	.071	.087	1.80	2.20	
B	.045	.053	1.15	1.35	
C	.079	.087	2.00	2.20	
D	.026 Nominal		0.65Nominal		
E	.047	.055	1.20	1.40	
F	.012	.016	.30	.40	
G	.000	.004	.000	.100	
H	.035	.039	.90	1.00	
J	.004	.010	.100	.250	
K	.012	.016	.30	.40	

#### Suggested Solder Pad Layout



# BAS40WT

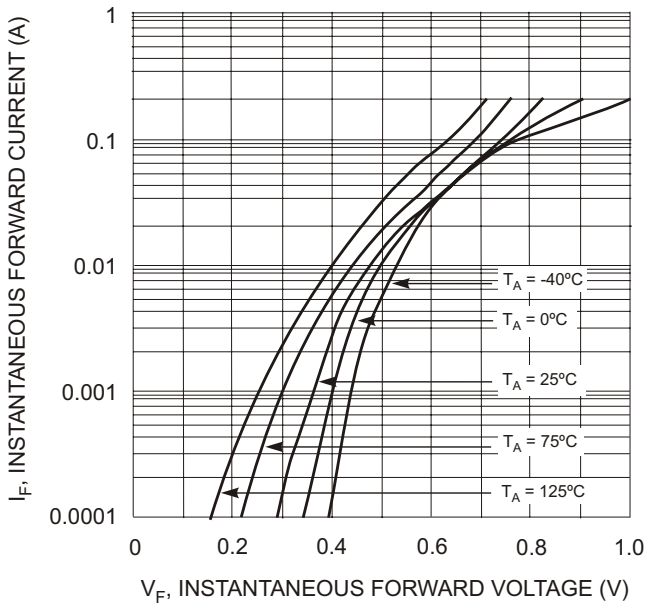


Fig. 1 Typical Forward Voltage

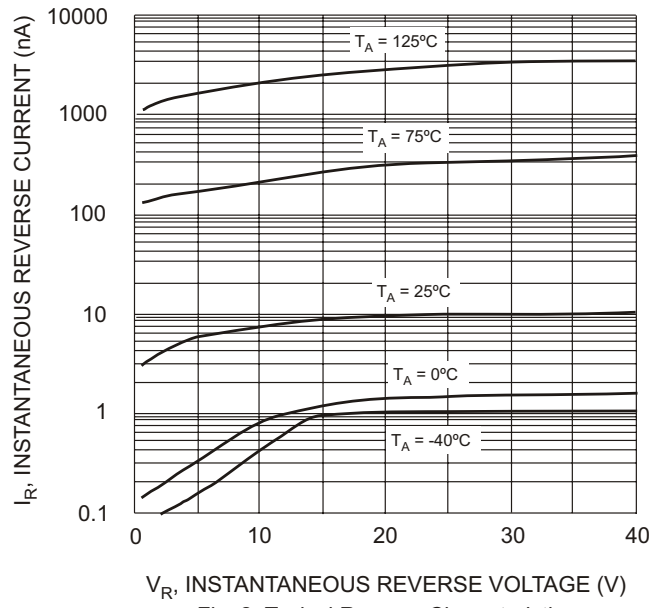


Fig. 2 Typical Reverse Characteristics

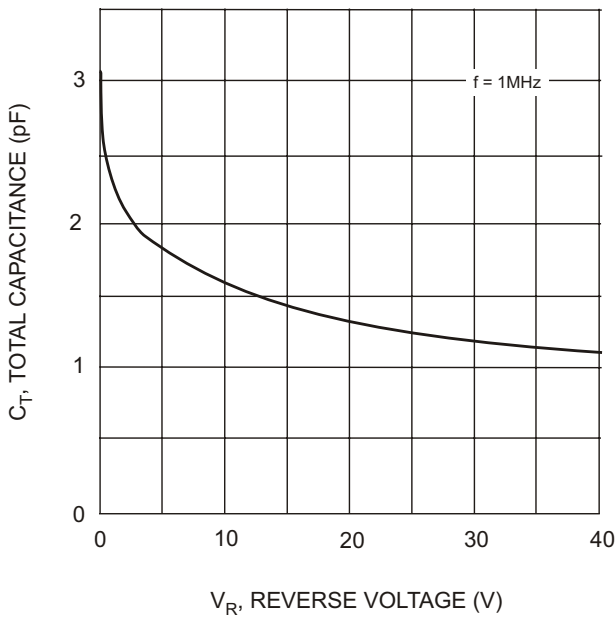
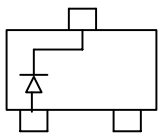
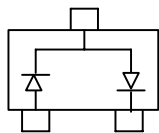


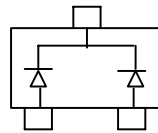
Fig. 3 Typical Capacitance



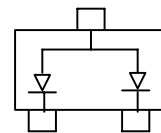
BAS40WT Marking:43/K43/S40



BAS40WT-04 Marking:44/K44/S42



BAS40WT-05 Marking:45/K45/S43



BAS40WT-06 Marking:46/K46/S44